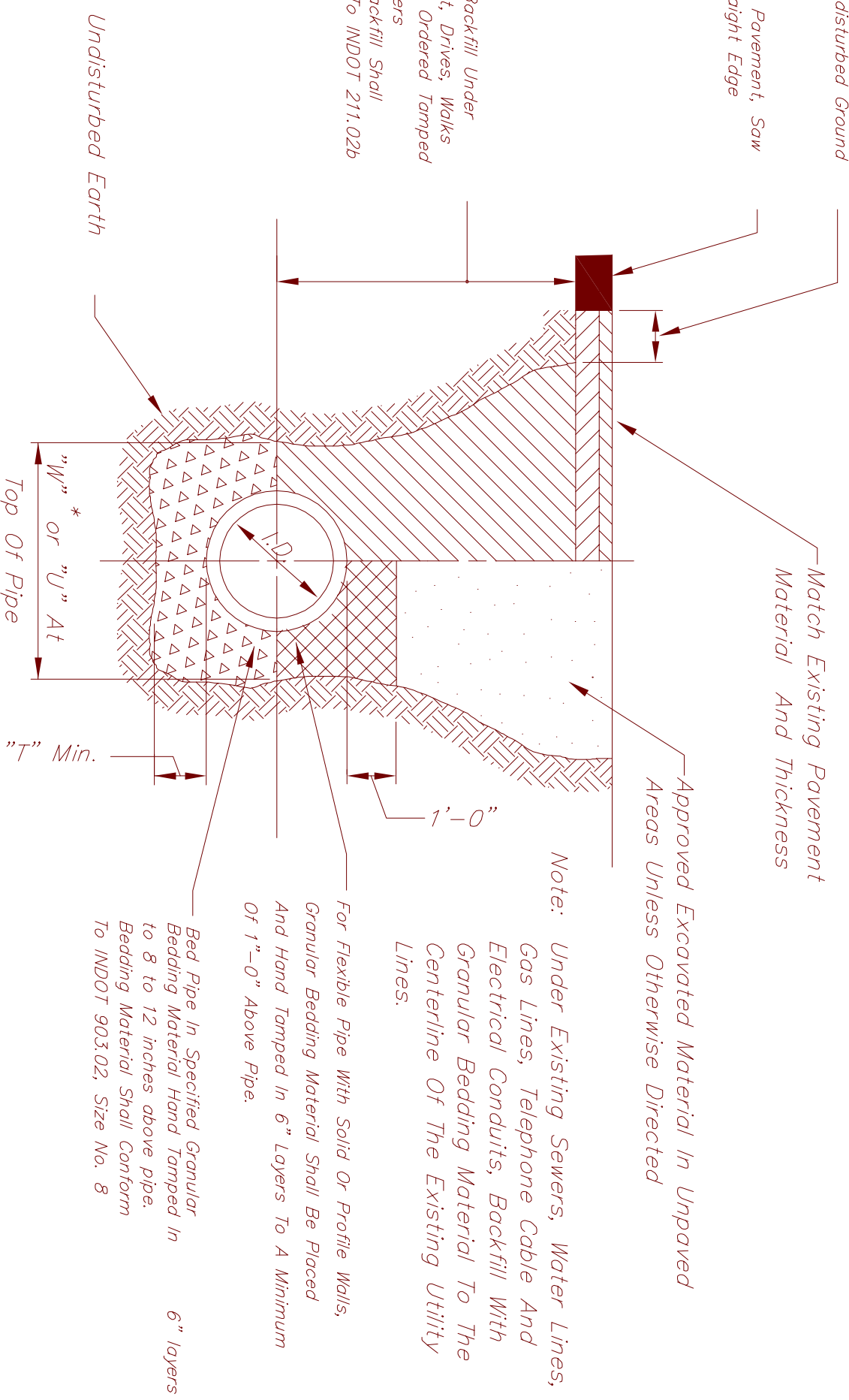


SIZE	"W"	"U"***	"T"
6"	2'-6"	2'-0"	4"
8"	2'-6"	2'-1"	4"
10"	2'-6"	2'-3"	4"
12"	2'-9"	2'-5"	4"
15"	3'-0"	2'-8"	5"
18"	3'-6"	3'-0"	5"
21"	3'-11"	3'-4"	6"
24"	4'-3"	3'-8"	6"
27"	5'-6"	3'-11"	6"
30"	5'-9"	4'-4"	6"
36"	6'-3"	5'-2"	6"
42"	6'-11"		8"
48"	7'-4"		9"
54"	8'-0"		9"
60"	8'-6"		9"
66"	9'-1"		9"
72"	9'-8"		10"
78"	10'-3"		10"

1'-0" Minimum
Undisturbed Ground

Existing Pavement, Saw
Cut Straight Edge

Special Backfill Under
Pavement, Drives, Walks
Or Where Ordered Tamped
In 6" Layers
Special Backfill Shall
Conform To INDOT 211.02b



Note: Under Existing Sewers, Water Lines, Gas Lines, Telephone Cable And Electrical Conduits, Backfill With Granular Bedding Material To The Centerline Of The Existing Utility Lines.

For Flexible Pipe With Solid Or Profile Walls, Granular Bedding Material Shall Be Placed And Hand Tamped In 6" Layers To A Minimum Of 1'-0" Above Pipe.

Bed Pipe In Specified Granular Bedding Material Hand Tamped In 6" layers to 8 to 12 inches above pipe. Bedding Material Shall Conform To INDOT 903.02, Size No. 8

* Note: "W" Is The Maximum Width For Rigid Pipes. "U" Is The Minimum Width For Flexible Pipes In Accordance With ASTM D-2321.

TRENCH SCHEDULE

** Table Is For ASTM D-3034, Wall Thickness Class SDR 35 For 6"-15" And ASTM F-679 Wall Thickness Class T-1 For 18"-36. For Other Flexible Pipes, Minimum Trench Width "U" Shall Meet Manufacturer's Requirements.

TRENCH DETAIL FOR SEWER AND WATER MAINS NTS

CITY OF CARMEL
STANDARD DETAILS

TITLE:
TRENCH DETAIL &
TRENCH SCHEDULE

Date: March 2001

Scale: Not To Scale

Drawn By:
Jones & Henry
Engineers, Inc.

Drawing Name: CW3